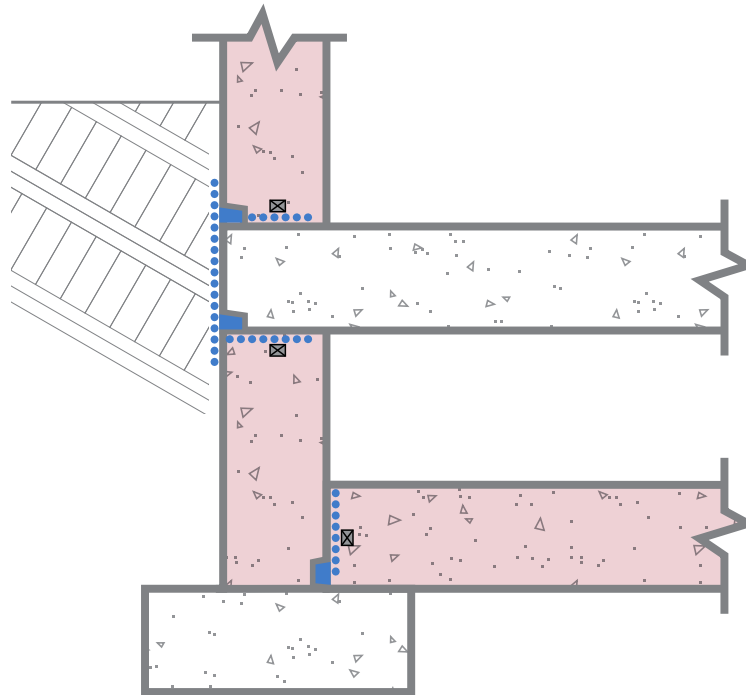


MULTI-LEVEL CONCRETE WALL & SLAB – BELOW GRADE – SLAB INTO WALL



..... CONCENTRATE SLURRY COAT
 ■ CONCENTRATE DRY-PAC
 ■ ADMIX
 X WATERSTOP

STEP 1: Where the slab will contact the wall modify the forms to create a linear groove in the finished concrete surface of the wall. The linear groove is to be aligned with the bottom of the slab and is to be 1½" (37 mm) high by 1" (25 mm) deep.

STEP 2: Pour Xypex Admix treated concrete and cure in accordance with ACI, EN or other applicable international standard. Strip forms including formwork for linear groove.

STEP 3: Clean joint including linear groove thoroughly. Apply Xypex Concentrate slurry to the linear groove at the rate of 1.5 lb./sq.yd. (0.8 kg/m²). Fill linear groove with Xypex Concentrate Dry-Pac and pack tightly to create the Xypex "sealing strip".

STEP 4: Apply slurry of Xypex Concentrate at 2.0 lb./sq.yd. (1.0 kg/m²) over sealing strip and extending to the full area of contact with the slab.

STEP 5: Pour bottom slab as per Step 2.

STEP 6: Modify the forms to create a linear groove in the exterior finished concrete surface at the suspended slab to wall joint. The linear groove is to be 1" (25 mm) high by 1½" (37 mm) deep.

STEP 7: Clean wall joint thoroughly. Apply Xypex Concentrate slurry to joint surface at the rate of 2.0 lb./sq.yd. (1.0 kg/m²).

STEP 8: Pour suspended slab as per Step 2 and strip forms including formwork for linear groove.

STEP 9: Clean joint including linear groove thoroughly. Apply Xypex Concentrate slurry to the linear groove at the rate of 1.5 lb./sq.yd. (0.8 kg/m²). Fill linear groove with Xypex Concentrate Dry-Pac and pack tightly to create the Xypex "sealing strip".

STEP 10: Apply slurry of Xypex Concentrate at 1.5 lb./sq.yd. (0.8 kg/m²) over the exterior vertical surface of the suspended slab and the sealing strips and extending to 6" (150 mm) on either side. Cure for 48 - 72 hours in accordance with normal Xypex coatings curing procedures.

Note 1: Schematic diagram shows Xypex application and waterstops. Inclusion, type and position of waterstops and expansion joints are at the discretion of the designer. Expanding waterstops may be placed on the slurry coat after it has dried or before application. Slurry coat may only be applied over waterstop if approved by waterstop manufacturer.

Note 2: Keyways may be incorporated into the joint design at the discretion of the designer.

Note 3: Xypex Admix may be considered for footings to protect the concrete and thus extend the service life of the structure.

Note 4: Schematic drawing shows Xypex Admix application. Specifier may consider the alternative use of Xypex dry shake (DS-Series) or Xypex coatings, where applicable. Refer to Xypex Standard Specifications for more information.