



Meeting the Challenge

Protecting Water Treatment Structures

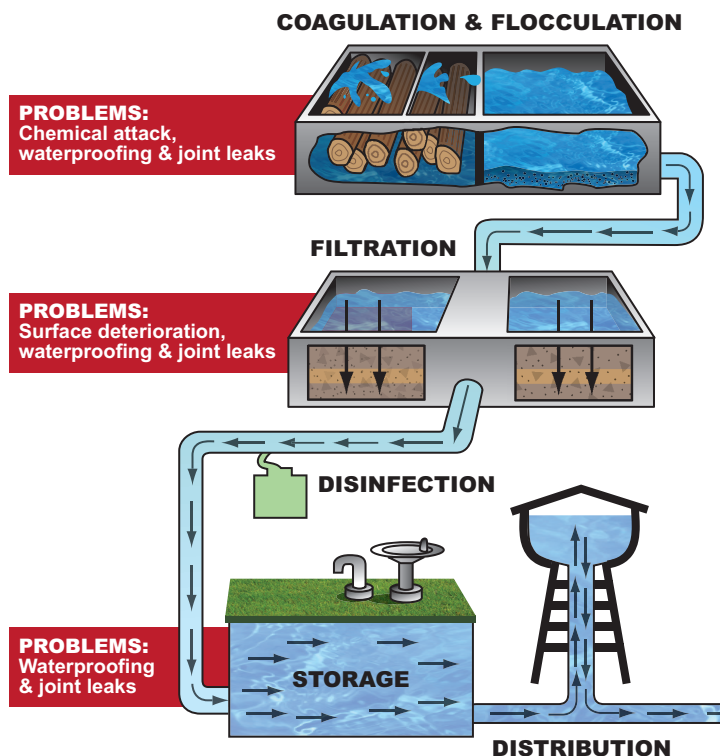
The structural integrity of holding tanks in water treatment plants depends entirely on the protection of steel reinforcement from corrosion. Inadequate waterproofing, cracking, joint-failure, and chemical attack are problems that will result in the deterioration of concrete. The consequences are costly rehabilitation and significantly reduced service life. With over 50 years of experience in 90 countries around the world, Xypex has extensive experience in the waterproofing and protection of municipal infrastructure, and is recognized as a key player in the water treatment industry. Our non-toxic Xypex Crystalline Technology has been officially approved around the globe for use with potable water, and has a vast portfolio of international project references. Whether used for new construction or the rehabilitation of water treatment structures, Xypex has gained an exceptional reputation for resisting extreme hydrostatic pressure, chemical attack and protecting the structural integrity of concrete.





The Structures – The Problems

Xypex products play a major role in the waterproofing and protection of concrete against hydrostatic pressure, cracks, joint-leaks, chemical attack and surface deterioration – problems typically encountered in the various concrete structures found in the water treatment process.



Hydrostatic Pressure

The waterproofing and protection of concrete in water treatment structures has two primary objectives:

To prevent water held in the structure from leaking out due to the hydrostatic pressure and to protect the reinforcing steel from corrosion.

The nature of concrete and its installation means having to deal with permeability problems created by the natural porosity of the concrete as well as defects (cold joints, honeycombs, rock pockets and tie-holes), joint leaks, freeze/thaw damage and drying shrinkage cracks. These problems typically leave the structure open to active leaks and accelerate the possibility of reinforcing steel corrosion and surface deterioration.

Additional Challenges

Chemical Attack

The addition of coagulants or flocculation chemicals such as iron salts, aluminum salts, or polymers creates an additional long-term problem for the concrete that can lead to surface deterioration. With a loss of concrete cover, the reinforcing steel in the structure becomes more susceptible to corrosion, deterioration, and ultimately results in the failure of the structure itself.

Surface Deterioration

The backwashing process used regularly to clean water filtration tanks is a naturally abrasive process which attacks the surface of the tanks, removing the traditional waterproofing coatings used to protect them. This in turn exposes the concrete to hydrostatic pressure, resulting in reinforcing steel corrosion and leaking.

Water Treatment Structures



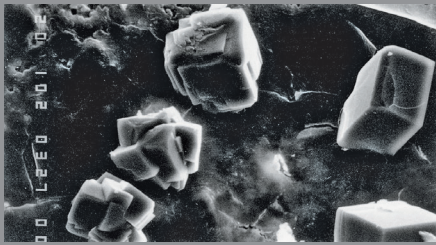
- Raw Water Intake Structures
- Flocculation Basins
- Sedimentation Basins
- Water Filtration Tanks
- Reservoirs & Distribution Structures

Typical Concrete Problems

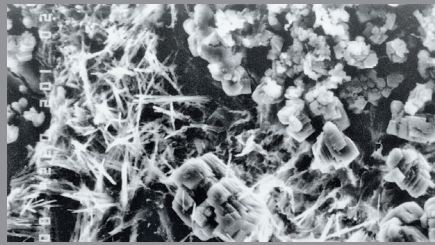


- Concrete Defects
- Cracks & Joint Leaks
- Surface Deterioration
- Chemical Attack
- Freeze/Thaw Damage

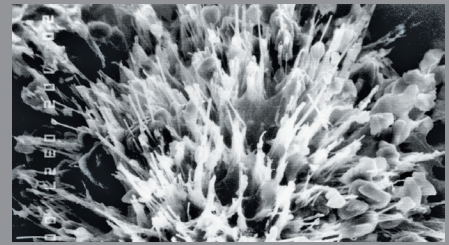
The Permanent Solution



CONCRETE UNTREATED



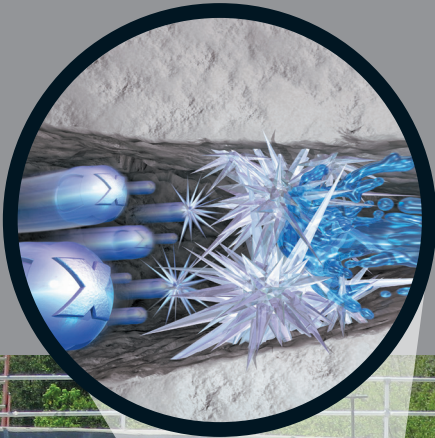
CRYSTALLIZATION INITIATED



CRYSTALLIZATION MATURE

Xypex Crystalline Technology

Xypex products use the natural porosity of concrete and chemical diffusion to penetrate its pores and capillaries. Inside the concrete, Xypex chemicals react with the by-products of cement hydration to form a non-soluble crystalline structure deep within the substrate. In this condition, the concrete becomes impermeable, preventing the penetration of liquids and chemicals from any direction even under extreme hydrostatic pressure. The chemical resistant properties of the crystalline structure prevent the effects of attack by chemicals used in the treatment process.



Proven Performance Worldwide

Comprehensive quality systems and standards along with thorough testing in the lab and the field have resulted in Xypex's highly respected position in the concrete industry. Xypex has been extensively tested by independent testing laboratories in the U.S., Canada, Australia, Japan, Europe and other countries.



The Xypex Advantage

Xypex Crystalline Technology works inside the concrete, thus avoiding typical problems associated with traditional barrier products.

✓ Permanent and reactivates whenever water is present	✓ Not subject to deterioration problems encountered by surface coatings and membranes
✓ May be applied on negative or positive side of concrete surface	✓ Resistant to chemical attack
✓ Self-heals static cracks up to 0.4 mm (1/64")	✓ Non-toxic; approved for use with potable water

The Right Products

Xypex Admix Advantages

- Permanent integral waterproofing
- Enhances concrete durability
- Value engineering
- Approved for potable water contact
- Resists damaging effects of water penetration and chemical attack

Xypex Admix for New Concrete Construction

Xypex Admix is the preferred choice for installing Xypex Crystalline Technology into new concrete structures for water treatment plants. Because Xypex Admix is blended into the mix at the time of batching, it becomes an integral part of the entire concrete matrix, reducing the potentially damaging effects of water penetration and chemical attack. Flexibility in application means Xypex Admix can be installed in pre-cast elements, cast-in-place structures and added to shotcrete concrete mixtures.



Precast



Cast-in-place



Shotcrete

Xypex Coating Advantages

- Doesn't require a dry surface
- Apply to either side of the concrete
- Won't puncture, blister or tear
- No costly surface priming or leveling
- Sealing, lapping & finishing, protection during backfilling not required
- Permanent waterproofing
- Enhanced concrete durability
- Doesn't contain VOCs

Rehabilitation & Repair

Xypex's coating systems and repair products enable municipalities, engineers and contractors to economically and confidently rehabilitate deteriorating water treatment structures. Xypex Concentrate and Modified are applied as slurry coatings to the surface of the concrete. Unlike other materials that need a dry substrate, Xypex products require a moist surface – conditions typical of existing water treatment structures. Xypex Patch'n Plug, Concentrate Dry-Pac and Megamix products are specifically designed to permanently repair concrete defects such as honeycombs, static cracks and faulty cold or construction joints. These products are also effective at filling tie-holes and sealing around pipe penetrations.

Other Accessory Products

- FCM 80
- Gamma Cure
- Xycrylic Admix



Coating
Concentrate & Modified



Plugging
Patch'n Plug



Rehabilitation
Patch'n Plug & Megamix



Visit us online at xypex.com
for more info & product details.



Reverse Osmosis Desalination Plant, Chile

Croton UV Water Treatment Plant, USA



Ponta Do Ismael Water Treatment Plant, Brazil

Koliba Water Reservoir, Bratislava

Find a Xypex distributor in your area:

- | | | | |
|------------------------|--------------------------|----------------------|------------------------|
| - ALBANIA | - ETHIOPIA | - LITHUANIA | - SAUDI ARABIA |
| - ARGENTINA | - FINLAND | - MACAU SAR OF CHINA | - SENEGAL |
| - AUSTRALIA | - FRANCE | - MACEDONIA | - SERBIA |
| - AUSTRIA | - GEORGIA | - MALAYSIA | - SIERRA LEONE |
| - BANGLADESH | - GERMANY | - MAURITIUS | - SINGAPORE |
| - BARBADOS | - GHANA | - MEXICO | - SLOVAKIA |
| - BELGIUM | - GREECE | - MONGOLIA | - SLOVENIA |
| - BERMUDA | - GUAM | - MONTENEGRO | - SOUTH AFRICA |
| - BOLIVIA | - HONDURAS | - MOROCCO | - SPAIN |
| - BOSNIA & HERZEGOVINA | - HONG KONG SAR OF CHINA | - NEPAL | - SRI LANKA |
| - BRAZIL | - HUNGARY | - NETHERLANDS | - SWITZERLAND |
| - BULGARIA | - ICELAND | - NEW ZEALAND | - TAIWAN |
| - CANADA | - INDIA | - NICARAGUA | - TANZANIA |
| - CHILE | - INDONESIA | - NIGERIA | - THAILAND |
| - CHINA | - IRAN | - NORWAY | - TUNISIA |
| - COLOMBIA | - IRELAND | - PAKISTAN | - TURKEY |
| - COSTA RICA | - ISRAEL | - PANAMA | - UGANDA |
| - CROATIA | - ITALY | - PARAGUAY | - UNITED ARAB EMIRATES |
| - CYPRUS | - JAPAN | - PERU | - UNITED KINGDOM |
| - CZECH REPUBLIC | - JORDAN | - PHILIPPINES | - URUGUAY |
| - DENMARK | - KENYA | - POLAND | - USA |
| - DJIBOUTI | - KOREA | - PORTUGAL | - VENEZUELA |
| - DOMINICAN REPUBLIC | - KOSOVO | - PUERTO RICO | - VIETNAM |
| - ECUADOR | - KUWAIT | - QATAR | - ZIMBABWE |
| - EGYPT | - LATVIA | - ROMANIA | |
| - ESTONIA | - LEBANON | - RUSSIA | |
| | | - RWANDA | |